



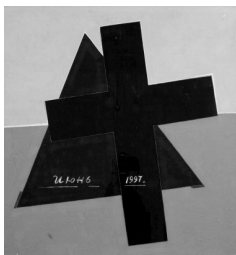
Municipal House
Jan Šafránek

GUIDE TO

Prague Galleries



Klementinum
Gallery
Historical
Cemeteries



Prague City Gallery –
The Stone Bell House
Eduard Steinberg

03-04/2017

NATIONAL GALLERY IN PRAGUE

www.ngprague.cz

Selected exhibitions: All exhibitions below are open daily, except Mon 10.00 – 18.00 (Kinsky Palace open every day).

Valdštejnská jízďárna (Wallenstein Riding School)

Prague 1, Valdštejnská 3, open daily 10.00–18.00

FRANTIŠEK SKÁLA – RIDING SCHOOL – exhibition presenting

mostly works since 2004 up till now **10. 3. – 3. 9.**

Kláster sv. Anežky České (Convent of St Agnes of Bohemia)

Prague 1, U Milosrdných 17

MEDIEVAL ART IN BOHEMIA AND CENTRAL EUROPE

1200-1550 permanent exhibition

HIDDEN FROM SIGHT – underpainting in 14th to 16th century panel paintings

from the collections of the National Gallery in Prague **Until 17. 9.**

SCULPTORS 'GARDEN – monastic gardens with an architectural tour

presenting works of prominent Czech artists (František Bílek, Michal

Gabriel, František Skála, Čestmír Suška, Jaroslav Róna, Stanislav Kolibal,

Karel Malich, Stefan Milkov, Pavel Opočenský, Aleš Veselý).

Schwarzenberský palác – Sídlo sbírky starého umění

(Schwarzenberg Palace – Collection of Old Masters)

Prague 1, Hradčanské náměstí 2

JOHANN KUPEZKY AND „THE BLACK ART“ **Until 12. 3.**

HAPPY ROME – FRENCH ENGRAVERS IN THE ETERNAL CITY **14. 3. – 11. 6.**

Salmovský palác – Sídlo Sbírky umění 19. století

(Salm Palace – The 19th Century Art Collection)

Prague 1, Hradčanské nám. 2

19TH CENTURY ART FROM CLASSICISM TO

ROMANTICISM permanent exhibition

CHARTA STORY & CHARTA 77 in photographs **14. 3. 2017 – 19. 1. 2019**

Šternberský palác (Sternberg Palace)

Prague 1, Hradčanské náměstí 15, tel. 233 090 570

EUROPEAN ART FROM THE CLASSICAL ERA TO THE CLOSE

OF THE BAROQUE permanent exhibition

WORK OF THE SEASON: ANDREA DEL SARTO –

MADONNA WITH A CHILD **Until 26. 3.**

AFTER REMBRANDT – MICHAELA MAUPICOVÁ **Until 30. 4.**

Palác Kinských – Sbírka orientálního umění

(Kinsky Palace – Collection of Oriental Art)

Prague 1, Staroměstské nám. 12, tel. 224 810 758

THE ART OF ASIA permanent exhibition

PAINTINGS AND CALLIGRAPHY **7. 3. – 4. 6.**

GERHARD RICHTER **26. 4. – 3. 9.**

Veletržní palác (Trade Fair Palace)

Prague 7, Dukelských hrdinů 47, tel. 224 301 111

COLLECTION OF MODERN AND CONTEMPORARY ART permanent exhibition

MAGDALENA JETELOVÁ – TOUCH OF TIME **17. 3. – 31. 8.**

JAN ZRZAVÝ – THE ILLUSTRATOR AND WORSHIPPER OF BEAUTY II. **7. 3. – 4. 6.**

AJ WEJ-WEJ – LAW OF THE JOURNEY **17. 3. 2017 – 7. 1. 2018**

EPOS 257. RETRO-REFLECTION **17. 3. – 4. 6.**

KNEADED KNOWLEDGE. THE LANGUAGE OF CERAMICS **17. 3. – 27. 8.**

INTRODUCING PAVLA DUNDÁLKOVÁ: WHEN I CLOSE THE WINDOW,

I DON'T HEAR THE STREET NOISE **17. 3. – 11. 9.**

MOVING IMAGE DEPARTMENT – CHAPTER VII – Brian Eno,

The Ship, featuring Jan Nálevka **17. 3. – 11. 9.**

POETRY PASSAGE#5: L'ESPRIT DES POÈTES OFFICIELS

ET CROCHUS **17. 3. – 11. 9.**

KEIICHI TAHARA – PHOTOSYNTHESIS 1978-1980 **17. 3. – 27. 8.**

OLAFUR ELIASSON – GREEN LIGHT **17. 3. – 2. 4.**

PRAGUE GALLERIES

PRAGUE CITY GALLERY

www.en.ghmp.cz

Dům U Kamenného zvonu (The Stone Bell House)

Prague 1, Staroměstské nám. 13, tel. 224 828 245

Open daily, except Mon 10.00–20.00

EDUARD STEINBERG – in cooperation with the Wiesbaden Museum,

Prague City Gallery presents paintings and drawings by Eduard Steinberg

(1937–2012), an artist of a Russian origin, a creative follower of Russian

suprematism in the second half of the 20th century **Until 28. 5.**

Městská knihovna (Municipal Library – 2nd floor)

Prague 1, Mariánské náměstí 1

Open daily, except Mon 10.00–18.00, Thu 10.00–20.00

„GALLERY“ – LUKÁŠ JASANSKÝ AND MARTIN POLÁK INTRODUCE JAN

MERTA – a site specific project, in which the artist interconnects his

earlier and latest works to continue in telling his story **Until 12. 3.**

RICHARD DEACON – exhibition of one of the most important representatives

of the so called „new English sculpture“ **14. 4. – 17. 9.**

Dům fotografie (House of Photography)

Prague 1, Revoluční 1006/5

Open daily, except Mon 10.00–18.00, Thu 10.00–20.00

KAREL KUKLIK (1937) – cross-section through the

artist's photographic work **Until 14. 5.**

Colloredo-Mansfeld Palace

Prague 1, Karlova 2

Open daily, except Mon 10.00–18.00

TOUR OF THE PALACE long-term exhibition

JOSEF ŽÁČEK – ANTICORPS – Josef Žáček is an introvert artist,

who, paradoxically, depicts in his metaphorical art topics

from social and political spheres **3. 3. – 18. 6.**

Villa Bílek

Prague 6-Hradčany, Mickiewiczova 1, tel. 224 322 021

Open daily, except Mon 10.00–18.00

FRANTIŠEK BÍLEK'S STUDIO – The villa, now newly open to the

general public, offers to its visitors a peek into František Bílek's studio,

a permanent display of several of the artist's early works, plus a collection

of his output in the field of sketches. **permanent exhibition**

FRANTIŠEK BÍLEK AND ALFONS MUCHA – LORD'S PRAYER –

exhibition presenting the first book by F. Bílek from 1901 with

the preface by Otakar Březina **permanent exhibition**

Troja Château

Prague 7-Troja, U Trojského zámku 1, tel. 283 851 614

Otevřeno Tue to Thu, Sat and Sun 10.00–18.00, Fri

13.00–18.00. The chateau is closed until 31.3.!!!

KAMPA MUSEUM – JAN AND MEDA MLÁDEK FOUNDATION

Prague 1, U Sovových mlýnů 503/2, tel. 257 286 147,

info@museumkampa.cz; www.museumkampa.cz

Open daily 10.00–18.00

Newly open restaurant and café Sovovy mlýny on the ground floor of the

main building offers a unique view of the river and the Charles Bridge and

traditional Czech dishes as well as international cuisine and local patisserie.

Open daily 11.00–23.30, www.sovovy-mlyny.cz.

FRANTIŠEK KUPKA (1871 – 1957) – František Kupka's works at Museum

Kampa represent one of the largest and most significant collections of

works by this great pioneer of abstract art. **permanent exhibition**

OTTO GUTFREUND (1889 – 1927) – One of the most important Czech

sculptors of the first half of the 20th century is represented in Museum

Kampa by bronze cubistic sculptures. **permanent exhibition**

TOO MANY TEETH – CZECH AND SLOVAK ART OF THE 1960S FROM THE

COLLECTIONS OF THE ZLATÁ HUSA GALLERY AND KAMPA MUSEUM **Until 23. 4.**

JOSEF HAMPL **4. 3. – 23. 4.**

You can find out more at www.museumkampa.cz/programs

Up-to-date info on opening hours: tel. 257 286 147 or www.museumkampa.cz

PRAGUE GALLERIES

DOX – CENTRE FOR CONTEMPORARY ART

Prague 7 Holešovice, Poupětova 1, tel. 295 568 123, 775 442 362, www.dox.cz

How to get there: metro C – Nádraží Holešovice,

tram 12, 14, 24, st. Ortenovo náměstí.

Open Mon 10.00 – 18.00, Tue closed, Wed and Fri 11.00–19.00, Thu

11.00 – 21.00 (café open till 22.00), Sat–Sun 10.00–18.00

The largest centre of contemporary art in the Czech Republic.

Multifunctional space for presentation of both Czech and international

art, architecture and design – café – bookshop – design shop.

HAVEL – This extensive exhibition presents photos by two leading

Czech photographers, Tomkí Němec and Bohdan Holomíček, who

for a number of years recorded important historical events as well

as ordinary moments in the life of Václav Havel. **Until 13. 3.**

TOMÁŠ ČISAŘOVSKÝ: INTENTION AND A SLIGHT COINCIDENCE. Tomáš

Čisařovský's newest series of ten paintings portrays various moments

from the life of playwright, author, dissident, and our first post-revolutionary

president, Václav Havel, in an original manner. **Until 6. 3.**

MATERIAL 307 – The exhibition presents the best of what was created

during the last six years in classroom No. 307 at the Academy of

Arts, Architecture and Design in Prague, specifically the Painting

Studio headed by Jiří Cernický and Marek Meduna. **Until 8. 5.**

JAMMING – Jamming is an experimental art project where mentally

handicapped artists co-create with artists handicapped by an academic

education. It is primarily about cooperation, openness, creativity,

and inclusion of the mentally handicapped. **17. 3. – 1. 5.**

SEVENTH-DAY ARCHITECTURE – Between 1945 and 1989, despite the Communist

state's hostility towards religion, over 3,000 churches were built in Poland.

The exhibition documents the Polish churches that defy the prefabricated and

uniform nature of Eastern Block architecture of the time. **17. 3. – 22. 5.**

THE CITY OF PRAGUE MUSEUM

Prague 8, Na Poříčí 52, tel. 224 816 772, 224 816 773

muzeum@muzeumprahy.cz; www.muzeumprahy.cz

Open daily, except Mon 9.00–18.00

THE OLD CINEMAS OF PRAGUE – THE FLEETING MAGIC

OF DARKENED THEATRES **Until 19. 3.**

PRAGUE VEDUTE OF THE 18TH CENTURY – The exhibition will present

18th century prints of Prague which are deposited in Czech institutions.

The unique array of originals from the fundamental collections of the

City of Prague Museum will present the changes of the city and set

the vedute phenomenon in a historical context. **15. 3. – 4. 6.**

OLDŘICH NOVÝ – LIFE BETWEEN FILM AND THEATRE **4. 4. – 30. 6.**

Ctěníce Château

Prague 9-Vinohrady, Bohdanečská 259/1, tel. 606 859 952, ctenice@muzeumprahy.cz

Open daily, except Mon 10.00–18.00 (April to October) and Tue to Fri

10.00–16.00 + Sat and Sun 10.00–18.00 (November to March)

FASHION GAMES – 60 YEARS OF ARTS AND CRAFTS AT THE

SECONDARY SCHOOL OF FASHION DESIGN **Until 23. 4.**

FUTURA – CENTRE FOR CONTEMPORARY ART + EVENTS

Prague 5, Holečkova 49, tel. 251 511 804,

info@futuraproject.cz; www.futuraproject.cz

Open daily, except Mon and Tue 11.00–18.00

UNIVERSAL HOSPITALITY – 2 artists: András Cséfalvay, Selda Assal,

Borsos Lőrincz, Martin Pláček, Michal Moravčík, Anca Benera-Arnold

Estefan, Csaba Nemes, Yevgenij Fiks, Erdem Gündüz, Dante Buu,

Gülşün Karamustafa, Tomáš Ráfa, Pavel Sterec **4. 3. – 16. 4.**

MARINA NORONHA, IVANA KRÁLÍKOVÁ – WANDERING WOMBS (WW)

4. 3. – 16. 4.

BRUD – THINGAMAJIG **4. 3. – 16. 4.**

EARLY SPRING IN THE ROYAL GARDEN **3. 3. – 12. 3.**

PRAGUE GALLERIES

RUDOLFINUM GALLERY

Prague 1, Alšovo nábřeží 12, tel. 227 059 205,

www.galerierudolfinum.cz, galerie@rudolfinum.org,

Open daily, except Mon 10.00–18.00, Thu 10.00–20.00

JUERGEN TELLER – ENJOY YOUR LIFE! – Considered one of the world's most

sought-after contemporary photographers, Juergen Teller has successfully

straddled the interface of both art and commercial photography. He came to fame

twenty-five years ago in 1991 when he photographed the band Nirvana, and his

iconic pictures of Kurt Cobain were published in Details magazine. **Until 19. 3.**

EBERHARD HAVEKOST – CONTENT **5. 4. – 2. 7.**

Adolf Loos Apartment and Gallery

Prague 1, Masarykovo nábřeží 250/1, tel. 602 325 990

Open Mon to Fri 10.00–18.00, Sat and Sun by appointment only, call tel.

602886621, http://www.aloos.cz/cs/o-nas/vystavni-sin-v-manesu

JOSEF MŽYK – FOREIGNER **Until 28. 3.**

HYPERREALISTS – DOROTA SADOVSKÁ AND MICHAL OŽIBKO **From 31. 3.**

Adolf Loos Apartment and Gallery would like to invite you to an exclusive

auction of selected paintings, held on **14. 5. 2017 at 14.00**

Artinbox Gallery

Prague 1, Perlová 370/3, Dům v Kislě

nadiarovderova@seznam.cz, www.artinbox.cz, nadiarovderova@seznam.cz

You can follow us on Facebook: Artinbox – galerie fotografie.

Open Tue to Thu 16.00–18.00 or on request by phone 777 748 433

DANIEL PEŠTA – SCHOOLS – How do schools form us? Relationships,

schoolmates, teachers, knowledge, society, truths and manipulated

information on world and society... The artist is coming back to

the era of bleak socialism when he was growing up, finding there

a lot of dark as well as good memories **Until 30. 3.**

LUBOŠ PLNÝ – *1967 +20242 – Luboš Plný (*1961) is the most

renowned representative of Czech art brut in the world. His works are in the

Francois Pinault collection in Paris, in abcd Bruno Deschard collection, in

the Christian Berts Gallery in Paris, in the Cavin-Morris Gallery collection

in New York, at Centre Pompidou in Paris, etc. **7. 4. – 26. 5.**

Ateliér Josefa Sudka (Josef Sudek Studio)

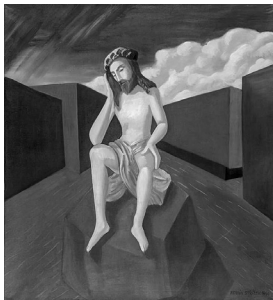
Prague 1, Újezd 30, tel. +420 725 723 410, +420 224 174 704

e-mail: http://www.atelierjosefasudka.cz, info@atelierjosefasudka.cz

Open Tue to Sun 12.00–18.00

PETER PUKLUS **9. 3. – 30. 4.**

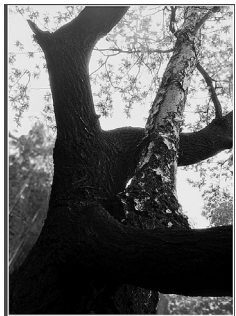
Jaroslav Fragner Gallery



Art Gallery in Cheb
Antonín Strížek

GUIDE TO

Galleries of the Czech Republic



Horácká Gallery in
Nové Město na Moravě
Josef Březina



Gallery of
Modern Art
in Roudnice
nad Labem
War Zone

03-04/2017

SELECTED EXHIBITIONS IN OTHER TOWNS:

BRNO

Moravian Gallery in Brno

www.moravska-galerie.cz, info@moravska-galerie.cz, tel. 532 169 111
Open Wed–Sun 10.00–18.00, Thu 10.00–19.00, Mon–Tue closed, Tue open
for groups after appointment by phone, contact +420 532 169 149

Pražák Palace

Brno, Husova 18

ART IS HERE – NEW ART *permanent exhibition*

ART IS HERE – MODERN ART *permanent exhibition*

UP FOR GRABS! – Jindřich Chalupecký Award winners

from the Magnus Art Collection *Until 19. 3.*

MARTIN HORÁK – SPINN-OFF *Until 19. 3.*

51+ THE MOST BEAUTIFUL CZECH BOOKS OF 2015 *Until 19. 3.*

MARIAN PALLA *21. 4. – 6. 8.*

JANA KALINOVÁ *21. 4. – 6. 8.*

Governor's Palace

Moravské náměstí 1a, Brno

ART FROM THE GOTHIC TO THE 19TH CENTURY *permanent exhibition*

ARISTOCRACY OF TASTE. THE PICTURE GALLERY IN RÁJEC NAD

SVITAVOU CHATEAU AND THE COLLECTING ACTIVITIES OF THE

PRINCES SALM-REIFFERSCHIEDT *Until 16. 4.*

Museum of Applied Arts

Husova 14, Brno

APPLIED ART AND DESIGN *permanent exhibition*

DESIGN.LIVE! MILAN PEKAŘ – VASES *Until 16. 4.*

OCHI OLGJOI CHORCHOI: LOGICS OF EMOTION *Until 16. 4.*

STUDIO PORTRAITS OF THE NOBILITY *Until 16. 4.*

AN ETUI FOR THE VENUS OF DOLNÍ VĚSTONICE *Until 16. 4.*

Jurkovič House

Jana Nečase 2, Brno-Žabovřesky

jurkovic@moravska-galerie.cz; upon reservation only

In January and February open Sat and Sun 10.00–12.00 and 12.30–18.00

DUŠAN JURKOVIČ. THE ARCHITECT AND HIS HOUSE *permanent exhibition*

MARTIN RAINIŠ – THE FIRST ARCHITECTURE *Until 2. 4.*

THE DŽADON HOUSE, JANA NEČASE 2 *28. 4. – 29. 10.*

The House of Art Brno

Malinovského náměstí 2, Brno, tel. 542 213 883, info@dum-umeni.cz,

http://www.dum-umeni.cz,

Open daily, except Mon 10.00–18.00

BIG LIGHT *Until 12. 3.*

SAM LEWITT, CHEYNEY THOMPSON *19. 4. – 30. 7.*

JIRÍ THÝN *19. 4. – 28. 5.*

The House of the Lords of Kunštát

Gallery G99

Brno, Dominikánská 9

INTER-IMAGES: THE ARCHIVES OF THE CINEMATOGRAPHER

JAROSLAV KUČERA *19. 4. – 11. 6.*

HANA STEHLÍKOVÁ BABYRÁDOVÁ, VLADIMÍR HAVLÍK, PETR KAMENICKÝ,

HANA NOVOTNÁ AND THEIR STUDENTS – BODY IMPACT *8. 3. – 26. 3.*

IN A LANDSCAPE – Tomáš Honz, Jakub Jansa, Dimitri Nikitin, Jonáš

Strouhal, Štěpánka Šimlová, Miroslav Vavřina *Until 26. 3.*

Fait Gallery

Brno, Ve Vaňkovce 2, fg@faitgallery.com, www.faitgallery.com

Open Tue to Sat 11.00–18.00, every second

Tuesday of a month open 11.00–21.00

MILAN GRYGAR – LIGHT, SOUND, MOTION *8. 3. – 3. 6.*

ČESKÉ BUDĚJOVICE

Dům umění – Galerie současného umění (House of Art – Gallery of Modern Art and Architecture)

České Budějovice, nám. Přemysla Otakara II. 38, tel. 386 360 539

adoks@centrum.cz, dumumenicb.cz

Open daily, except Mon 10.00–13.00 and 13.30–18.00

ŠTĚPÁN GRYGAR *Until 19. 3.*

ADRIENA ŠIMOTOVÁ *23. 3. – 22. 4.*

SMILJAN RADIC – ARCHITECTURE *27. 4. – 28. 5.*

HA VLÍČKŮV BROD

Galerie výtvarného umění v Havlíčkově Brodě (Art Gallery)

Havlíčkův Brod, Havlíčkovo nám. 18, tel. 569 427 035, www.galeriehb.cz

Open daily, except Mon 9.00–12.00 and 13.00–17.00

MEMBERS OF THE ASSOCIATION OF CZECH GRAPHIC ARTISTS

HOLLAR IN THE PAST AND AT PRESENT *Until 19. 3.*

ANTONÍN KANTA – VIBRATIONS OF THE SOUL *24. 3. – 30. 4.*

HRADEC KRÁLOVÉ

Galerie moderního umění v Hradci Králové (Modern Art Gallery)

sbirky@galeriehk.cz, www.galeriehk.cz

Open daily, except Mon 10.00–18.00

TRANSFORMATIONS OF AN IMAGE – IMAGES OF

TRANSFORMATION *permanent exhibition*

THE STORY OF (TO)DAY – contemporary figurative painting *Until 21. 5.*

CHEB

Galerie výtvarného umění v Chebu (Art Gallery)

Cheb, nám. Krále Jiřího z Poděbrad 16, tel.

354 422 450, info@gavu.cz, www.gavu.cz

Open daily, except Mon 10.00–18.00

20TH CENTURY CZECH MODERN ART (1ST FLOOR) *permanent exhibition*

GOthic SCULPTURE *permanent exhibition*

VÁCLAV MALINA, MILAN MAUR – PARALLEL YEARS *Until 26. 3.*

PETR KVIČALA *6. 4. – 18. 6.*

ŠÁRKA KOUDELOVÁ – PRISM *Until 26. 3.*

ANTONÍN STRÍŽEK – JESUS (1994) *Until 2. 4.*

BEDŘICH ŠTEFAN – THE TREE GRACES *6. 4. – 25. 6.*

WORKS OF ARTISTS FROM PILSEN FROM THE 1960S AND THE

1980S IN THE COLLECTIONS OF GAVU CHEB *Until 23. 4.*

Retromuseum

DESIGN AND LIFESTYLE OF 1960S TO 1980S IN THE CZECHOSLOVAK

SOCIALIST REPUBLIC *permanent exhibition*

PLASTIMAT 1946–1996 *Until 30. 4.*

MR EGG. THE CHARACTER OF CZECHOSLOVAK COMMERCIAL *Until 28. 5.*

CHÝNOV U TÁBORA

The City Gallery Prague – Bílek's House in Chýnov

Chýnov near Tábor, Údolní 133, tel. 381 297 624, 774 204 388

Open only on request

BETWEEN PRAGUE AND CHÝNOV – BÍLEK'S WORKS *permanent exhibition*

JABLONEC NAD NISOU

MY Gallery

Jablonec nad Nisou, Mírové náměstí 19, galerie-my@seznam.cz

Exhibition Hall in the House of Jana and Josef V. Scheybal

Kostelní ulice 6, tel. 483 356 202

Open Tue to Fri 10.00–12.00 and 13.00–17.00, Sat 10.00–13.00

KASPER'S „PIDLUKE AND PADLUKE“ – puppets and puppet theatres

from the collection of Marie and Pavel Jirásek *Until 9. 3.*

THE PAINTER LADISLAV ZÁKOUCKÝ / 1916–2005/ – exhibition of an

artist who lived in Rychnov u Jablonce nad Nisou *28. 3. – 19. 5.*

JIHLAVA

Oblastní galerie Vysočiny v Jihlavě (Regional Art Gallery)

Jihlava, Masarykovo nám. 24, tel. 567 309 722, www.ovg.cz

Open daily, except Mon 10.00–18.00

Masarykovo náměstí 24

FROM OUR COLLECTIONS... *permanent exhibition*

DENISA KRAUSOVÁ – BURNING POTATO *Until 23. 4.*

Komenského 10

PERMANENCE OF FLOW *Until 2. 4.*

ANOTHER LIFE OF A SNAP *Until 16. 4.*

NEVERENDING STORY – A LIFE AFTER ART *6. 4. – 30. 4.*

IGLOO 4 – HUNGARIAN SOUND ART *2. 3. – 28. 5.*

CONTEMPORARY POLISH PAINTING *27. 4. – 11. 6.*

KARLOVY VARY

Galerie umění Karlovy Vary (Art Gallery)

Karlovy Vary, Goethova stezka 6, tel. 353 224 387

Open daily, except Mon 10.00–17.00

www.galeriekvary.cz, info@galeriekvary.cz

CZECH ART OF THE 20TH CENTURY FROM THE COLLECTION OF THE ART

GALLERY IN KARLOVY VARY – A. Slaviček, J. Preisler, J. Trampota, J. Zrzavý,

J. Čapek, E. Filla, J. Šíma, M. Medek, V. Boštík, K. Nepraš, M. Rittstein, Z.

Sykora, K. Malich, F. Skála, J. Róna and others *permanent exhibition*

VÁCLAV ŠERÁK AND HIS STUDENTS – FIRE/CLAY/ICE – an exhibition

project prepared in cooperation with the Museum of Decorative Arts

in Prague presents a prominent personality of Czech and European

ceramics art – professor Václav Šerák (1931) *Until 2. 4.*

SYMBOL – STRUCTURE – SPACE, ZEICHEN – STRUKTUR – LEBENSRAUM

– exhibition prepared in cooperation with the Kunstverein Hochfrank in

Selb as a part of MY 2 / WIR 2 (a Czech-German project), presenting

three Czech and three German artists (Karel Kocourek, Milan Maur, Pavel

Štýbr, Hubert Huber, Sabine Richter, Diet Saylor) *6. 4. – 8. 5.*

Villa Becher – Interactive Gallery

Karlovy Vary, Krále Jiřího 1196/9, tel. 354 224 111, www.becherovavila.cz

Open daily, except Mon 10.00–17.00

HISTORY OF THE VILLA *permanent exhibition*

JINDŘICH ŠTŘEIT – HOME (LESS) – Jindřich Štreit (1946),

a prominent Czech photographer, focuses in his documentary

photography mostly on social topics *Until 2. 4.*

IN QUEST OF THE SECRET OF SPACE, HEIGHT AND DEPTH / HOLLAR 1917 – 2017/ –

Sixty selected prints, representing one hundred years of Hollar – The

Association of Czech Graphic Artists (1917 – 2017) *13. 4. – 25. 6.*

KLATOVY

Gallery Klatovy/ Klenová

Galerie U Bílého jednorožce (Gallery at the White Unicorn)

Klatovy, nám. Miru 149, tel. 376 312 049

www.gkk.cz, klatovy@gkk.cz

Open daily, except Mon 10.00–12.00 and 13.00–17.00

ZDENA KOLEČKOVÁ – THE METAPHYSICS OF LOSS *Until 26. 3.*

VIKTOR PIVOVAROV – GRANDPA, HAVE YOU SEEN GOD? *1. 4. – 4. 6.*

Kostel sv. Vavřince v Klatovech (St Lawrence Church in Klatovy)

OLBRAM ZOUBEK *22. 4. – 18. 6.*

Klenová

Galerie Klatovy / Klenová, p.o.

Klenová 1, 340 21 Janovice nad Úhlavou

www.gkk.cz, info@gkk.cz, tel. 376392208

Open daily, except Mon 10.00–12.00, 12.30–16.00

JOURNEY 2017 – 14th exhibition of young art students from ZUŠ PK *2. 4. – 4. 6.*

ONE HUNDRED YEARS OF ROAMING IN THE ŠUMAVA MOUNTAINS

– exhibition commemorating the 100th anniversary of Hollar, the

Association of Czech Graphic Artists *2. 4. – 11. 6.*

MICHAEL WELLNER POSPÍŠIL – PARIS, MY DESTINY *2. 4. – 11. 6.*

KUTNÁ HORA

GASK – Gallery of the Central Bohemian Region

Kutná Hora, Barborská 51–53, tel. 725 377 433

pokladna-kh@gask.cz, www.gask.cz

Open daily, except Mon 10.00–18.00

STATES OF MIND – BEYOND THE IMAGE *Until 31. 12.*

THOSE CHILDREN KEEP ON PLAYING *Until 12. 3.*

VLADIMÍR VĚLA – PLATFORMS *Until 26. 3.*

PENOCZE – PLAN3 *Until 26. 3.*

PETR FIALA – THE CZECH HORIZON *Until 26. 3.*

DOROTA SADOVSKÁ – WHITE THERAPY *Until 26. 3.*

ZBYNĚK JANAČEK *Until 23. 4.*

JOSEF HAMPL – SEWN GRAPHIC WORKS *Until 23. 4.*

LIBEREC

Oblastní galerie v Liberci (Regional Art Gallery)

Liberec, U Tiskárny 1, tel. 485 106 325, www.ogl.cz

Open daily, except Mon 10.00–17.00 (Thu 10.00–19.00)

NOT A SINGLE SNAKE IN SIGHT – JOSEF ČAPEK – FRANTIŠEK

HRUBÍN – JAN KÁCEL – MILOSLAV KABELÁČ *Until 30. 4.*

RICHARD LOSKOT *9. 3. – 26. 6.*

LETTERS IN PAINTINGS *9. 3. – 21. 5.*

FRANTIŠEK TKADLÍK (1786–1840) *9. 3. – 18. 6.*

ANNA HULAČOVÁ *9. 3. – 26. 6.*

LITOMĚŘICE

Severočeská galerie výtvarného umění

v Litoměřicích (Art Gallery)

Litoměřice, Michalská 7, tel. 416 732 382

www.galerie-ltm.cz

Open daily, except Mon 9.00–12.00 and 13.00–17.00 (October to March)

and daily, except Mon 9.00–12.00 and 13.00–18.00 (April to September)

NAIVE ART *permanent exhibition*

13TH – 20TH CENTURY ART – Master of the Litoměřice altar, Master IW,

P. Brandl, J. Kupecký, M. B. Braun, A. Mánes, J. Mánes, A. Kosárek, A. B.

Piepenhagen, E. G. Doerell, A. Chittussi, V. Brožík *permanent exhibition*

RICHARD KONVIČKA – ELECTRONIC WALKER – paintings

and drawings 2001–2016 *17. 3. – 23. 4.*

Galerie a muzeum litoměřické diecéze (Litoměřice

Diocese Gallery and Museum)

Litoměřice, Mírové náměstí 24

Open daily, except Mon 9.00 – 12.00 and 13.00 – 17.00 (October to March)

and daily, except Mon 9.00 – 12.00 and 13.00 – 18.00 (April to September)

12TH – 18TH CENTURY ART – Master of the Tiburtin Sybill, Master IW, L. Cranach

sen., J. Steen, K. Škréta, A. Kern, T. Pock, M. B. Braun *permanent exhibition*

LOUNY

Galerie města Loun (Louny Municipal Gallery)

Louny, Osvoboditelů 441, www.gaml.cz, info@gaml.

cz (Vrchlického divadlo info@divadlolouny.cz)