

<b>PRAGUE</b>
<b>NATIONAL GALLERY PRAGUE</b>
www.ngprague.cz, www.facebook.com/NGPrague, info@ngprague.cz Open Tue to Sun 10.00–18.00, Wed 10.00–20.00
<b>Klášter sv. Anežky České (Convent of St Agnes of Bohemia)</b> Prague 1, U Milosrdných 17
<b>MEDIAeval ART in BOHEMIA and CENTRAL EUROPE 1200–1550 permanent exhibition</b> <b>SCULPTURE GARDEN permanent exhibition</b>
<b>Schwarzenberský palác (Schwarzenberg Palace)</b> Prague 1, Hradčanské náměstí 2
<b>OLD MASTERS permanent exhibition</b>
<b>Šternberský palác (Sternberg Palace)</b> Prague 1, Hradčanské náměstí 15
<b>OLD MASTERS II permanent exhibition</b>
<b>Valdštejnská jízďárna (Wallenstein Riding School)</b> Prague 1, Valdštejnská 3
<b>PETR BRANDL: THE STORY OF A BOHEMIAN until 11. 2. 2024</b>
<b>Veletržní palác (Trade Fair Palace)</b> Prague 7, Dukelských hrdinů 47, tel. 224 301 122
<b>1796–1918: ART OF THE LONG CENTURY permanent exhibition</b> <b>1918–1938: FIRST CZECHOSLOVAK REPUBLIC permanent exhibition</b> <b>1939–2021: THE END OF THE BLACK-AND-WHITE ERA permanent exhibition</b> <b>1956–1989: ARCHITECTURE FOR ALL permanent exhibition</b> <b>ATLAS permanent exhibition</b> <b>PREPARATORY WORK FOR MURDER IN THE HOUSE</b> – study drawings by Jakub Schikaneder <b>until 5. 11.</b> <b>WATERCOLOUR BETWEEN PRAGUE AND VIENNA until 7. 1. 2024</b> <b>PRAVOSLAV SOVÁK: THE LOUDNESS OF SILENCE until 7. 1. 2024</b> <b>FOTOGRAF FESTIVAL #13 until 11. 2. 2024</b> <b>MILENA DOPITOVÁ: EVEN ODD 10. 11. 2023 – 3. 3. 2024</b>

**PRAGUE CITY GALLERY**

www.en.ghmp.cz, pr@ghmp.cz, tel. 224 826 391
<b>Bilkova vila (Villa Bilek)</b> Prague 6-Hradčany, Mickiewiczova 1, tel. +420 224 322 021 Open daily, except Mon 10.00–18.00
<b>FRANTIŠEK BILEK'S STUDIO permanent exhibition</b> <b>FRANTIŠEK BILEK and OTOKAR BREZINA until 31. 12.</b>
<b>Dům fotografie (House of Photography)</b> Prague 1, Revoluční 5; Open daily, except Mon 10.00–18.00, Thu 10.00–20.00
<b>DRYADS/ROMAN PARTIES</b> – exhibition presenting appealing works by internationally established artists – Marie Lukáčová and Pauline Jardin Courmier <b>14. 11. 2023 – 25. 2. 2024</b>

<b>Dům U Kamenného zvonu (The Stone Bell House)</b> Prague 1, Staroměstské nám. 13; Open daily, except Mon 10.00–20.00
<b>THINKING THROUGH FILMS</b> – film is a form that „thinks“ through montage, or editing composition <b>8. 11. 2023 – 18. 2. 2024</b>
<b>LIGHT UNDERGROUND V: CAN YOU STILL FEEL THE BUTTERFLIES 8. 11. 2023 – 18. 2. 2024</b>

<b>Městská knihovna (Municipal Library – 2nd floor)</b> Prague 1, Mariánské náměstí 1
Open daily, except Mon 10.00–18.00, Thu 10.00–20.00
<b>MIROSLAV PETŘÍČEK: THINKING THROUGH IMAGES</b> – exhibition inspired by the book of the Czech philosopher Miroslav Petříček <b>until 28. 1. 2024</b>

<b>MUSEUM KAMPA - JAN AND MEDA MLÁDEK FOUNDATION</b>
Prague 1, U Sovových mlýnů 503/2, www.museumkampa.cz, info@museumkampa.cz, tel. 257 286 147, Open daily 10.00–18.00
<b>FRANTIŠEK KUPKA, OTTO GUTFREUND: MASTERS OF WORLD ART permanent exhibition</b> <b>FASHION PARADOX – ART VS. FASHION until 19. 11.</b> <b>LUBOMÍR PRÝBL: RETROSPECTIVE until 19. 11.</b> <b>JAN HENDRYCH: SYMPOSIA until 19. 11.</b> <b>ALENA FOUSTKOVÁ: WOMEN MUST COVER THEIR HEADS BECAUSE THEY ARE NOT THE IMAGE OF GOD 2. 12. 2023 – 28. 1. 2024</b> <b>MICHAEL RITTSTEIN: FEET ON THE TABLE 9. 12. 2023 – 10. 3. 2024</b> <b>FRANTIŠEK TICHÝ / VÁCLAV CHOCHOLA 12. 2023 – 10. 3. 2024</b>

<b>DOX – CENTRE FOR CONTEMPORARY ART</b>
Prague 7-Holešovice, Poupětova 1, www.dox.cz, info@dox.cz, tel. 295 568 123 How to get there: metro C – Nádraží Holešovice, tram 12, 6, Ortenovo náměstí stop. Open Wed to Sun 12.00–18.00
<b>ANDRES SERRANO: INFAMOUS BEAUTY</b> – more than 120 works by the American artist and photographer <b>until 7. 1. 2024</b>
<b>BEYOND WORDS until 11. 2. 2024</b>
<b>IT IS A PAINFUL THING TO BE ALONE: WE ARE BUT ONE until 3. 3. 2024</b>
<b>EGYPT: A PROBE THROUGH THE ARCHIVE</b> – presentation of photographs from the archives of the Czech Institute of Egyptology <b>until 31. 12.</b>

<b>PRAGUE CASTLE</b>
www.hrad.cz, info@hrad.cz, tel. 224 372 434, 224 372 435 Open daily 10.00–18.00
<b>PRAGUE CASTLE PICTURE GALLERY</b> daily 9.00–17.00 <b>perm. exhibition</b> <b>Cisarská konírna (Imperial Stables)</b> <b>ST VITUS CATHEDRAL'S S WINDOWS until 31. 12.</b> <b>Jizďárna Pražského hradu (Prague Castle Riding Hall)</b> <b>CZECH AND SLOVAK ARCHITECTURE until 30. 11.</b>

<b>Ambit Gallery (Our Lady of the Snows Monastery)</b> Prague 1, Jungmannovo nám. 18; Open daily 10.00–18.00
<b>THE ASSOCIATION OF CZECH PHOTOGRAPHERS – MEMBER EXHIBITION until 19. 11.</b>
<b>Art &amp; Event Gallery Černá Labuť</b> Prague 1, Na Poříčí 25, 8th floor, www.cemalabut.cz Open Mon to Fri 10.00–17.00, Sat and Sun 14.00–18.00
<b>JAN SAMEC: QUADRATURE OF A SQUARE until 19. 11.</b> <b>ERIKA VOITH: THE GIRL WITH GOLDEN FINGERS 12. 12. 2023 – 12. 2. 2024</b>

<b>ART Concept Gallery</b> Prague 1, Little Exhibition Hall Mánes, Masarykovo nábřeží 250 tel. 734 143 568, www.g-a-c.cz, Open Tue to Fri 13.00–19.00, Sat 11.00–18.00
<b>ILJA HARTINGER: YEARS WITH COLOURS until 16. 11.</b> <b>PAVEL ROUČKA: ADAM'S LAMENT 28. 11. 2023 – 2. 2. 2024</b>

<b>Artinbox Gallery</b> Prague 1-Old Town, Perlová 370/3, Dům v Kishně, www.artinbox.cz www.facebook.com/ArtinboxGallery, nadia@artinbox.cz Open Tue to Thu 16.00–18.00 or on request +420 777 748 433
<b>WIND IN THE SAILS</b> – Dagmar Havlíčková, Vít Kosinka, Daniela Mikulášková, Ota Prouza, Veronika Zapletalová <b>until 24. 11.</b> <b>WINTER ARTSALON</b> – exhibition of the works of art that you can buy <b>30. 11. 2023 – 5. 1. 2024</b>

<b>Ateliér Josefa Sudka (Josef Sudek Studio)</b> Prague 1, Újezd 30, tel. 251 510 760, www.atelierjosefasudka.cz, info@atelierjosefasudka.cz; Open daily, except Mon 12.00–18.00
<b>MILAN PITLACH: PHOTOGRAPHS OF CZECHOSLOVAKIA 1968–1980 3. 11. – 15. 12.</b>

<b>Bold Gallery</b> Prague 7, U Městského pivovaru 6a, www.boldgallery.art, info@boldgallery.art Open Tue to Fri 14.00–18.00, Sat 11.00–18.00 or on request 773 779 988
<b>TEREZA ŠTĚTINOVÁ &amp; MARTIN ŽÁK: THREE BODIES, SIX LEGS, SIX ARMS</b> – sculptural depiction of the basic human experience of love in all its forms from romantic and platonic, through physical and passionate to fetishistic worship <b>1. 11. – 2. 12.</b>

<b>Hollar Gallery</b> Prague 1, Smetanovo nábřeží 6, tel. 737 288 310, www.hollar.cz, Open daily, except Mon 10.00–12.00 and 13.00–18.00
<b>XÉNIA HOFFMEISTEROVÁ: TRAMONTANA 9. 11. – 3. 12.</b> <b>XXIX. FESTIVAL OF SMALL PRINTS 7. 12. – 23. 12.</b>

<b>Chráská Doležal Gallery</b> Prague 10, Krymská 185/30, tel. 608 398 000 www.mdart.cz/galerie, martin@mdart.cz Open Tue to Fri 14.00–19.00
<b>MARTIN CHRÁSKA DOLEŽAL: ABSTRACTION until 31. 12.</b>

<b>JSP ART GALLERY</b> Prague 1, Lázeňská 287/4, tel. 730 169 997 www.jspartgallery.cz, jspastuzak@jspartgallery.cz, Open Mon to Sat 11.00–19.00
<b>WHISPER OF THE BODY</b> – Viktor Pivovarov, Jiří David, Josefína Jonášová, Magdalena Roztočilová <b>until 18. 12.</b>

<b>Kooperativa Gallery</b> Prague 8, Pobřežní 665/21 (3rd floor), www.koop.cz/galerie, galerie@koop.cz Open Tue to Fri 14.00–18.00; Sat and Sun 10.00–18.00 (including public holidays)
<b>PUPILS OF JULIUS MAŘÁK</b> – a representative exhibition of a famous landscape painting school led by Julius Mařák at Prague Academy of Arts in 1887–99 (F. Kaván, A. Slavíček, O. Lebeda, A. Kalvoda, J. Panuška, A. Hudeček and others) <b>until 28. 1. 2024</b>

<b>Gallery of Art Critics</b> Prague 1, Jungmannova 31 / 36, Palác Adria, 1st floor, tel. 224 494 205 (606 601 224), galeriekritiku@volny.cz, www.galeriekritiku.cz Open daily, except Mon and public holidays 11.00–18.00
<b>PETR KOZEL: OBVERSE AND REVERSE</b> – steel bas-reliefs, complemented by an abstract painting on canvas <b>until 19. 11.</b> <b>RICHARD KOČI: CHIMERAS</b> – narrative paintings as a tool for self-discovery <b>21. 11. – 10. 12.</b>

<b>Kroupa Gallery</b> Prague 1, Voršílská 5, tel. 777 942 000 www.galeriekroupa.cz, Open Tue to Sat 13.00–18.00
<b>VLASTIMIL BERÁNEK – SHOWROOM PRAGUE</b> , open from 1. 11. 2023 Mon to Fri 13.00–18.00
<b>JIRÍ KOVÁŘIK: SPANISH CYCLE until 10. 2. 2024</b> <b>ADÉLA OLIVA: BRUITS DE COULOIR until 10. 2. 2024</b>

<b>Kunsthalle Praha</b> Prague 1, Klárov 5, tel. +420 241 004 111 www.kunsthallepraha.org, info@kunsthallepraha.org Open Mon 11.00–19.00, Wed 11.00–21.00, Thu–Sun 11.00–19.00
<b>KRISTOF KINTERA: SCULPTURES OF HOUSES AND A GIRL WITH A DOVE</b> (exhibition in the park in Klárov) <b>LUNCHMEAT STUDIO: THE GRIEF OF MISFIT CATHEDRALS until 14. 1. 2024</b> <b>ELMGREEN &amp; DRAGSET: READ 16. 11. 2023 – 22. 4. 2024</b>

<b>La Femme Gallery</b> Prague 1, Bilkova 2 (opposite The Intercontinental Hotel), tel. 224 812 656, 775 726 067, www.glf.cz, info@glf.cz; Open daily 10.00–18.00
<b>TYLEK AND TYLEČEK</b> – a unique exhibition of the works by a married couple of artists who lived and worked in Paris for many years <b>1. 11. – 26. 11.</b> <b>CHRISTMAS TUNING</b> – paintings, prints, sculptures and glass by contemporary Czech artists <b>27. 11. – 31. 12.</b>

<b>Lapidarium Gallery</b> Prague 1, Rámová 6, www.galerielapidarium.cz, svetlana_kalousova@gmail.cz, tel. 602 298 550; Open daily, except Mon 11.00–17.00
<b>INSITA PRAHA 2023</b> – 3rd year of international naive and outsider art show <b>4. 11. – 3. 12.</b> <b>LAPIDARIUM GALLERY CHRISTMAS SALON</b> – Laco Deczi and his guests: B. Budil, J. Kalousek, J. Peca and others <b>8. 12. 2023 – 31. 1. 2024</b>

<b>Millennium Gallery</b> Prague 1, Tržiště 5, tel. 257 534 584, www.gallerymillennium.cz, gallerymillennium@centrum.cz; Open Tue to Fri 12.00–18.00 The gallery will be closed 6. 11. – 19. 11. due to reconstruction.
<b>CHRISTMAS EXHIBITION</b> – traditional Christmas exhibition (paintings, sculptures, drawings, prints) <b>21. 11. – 29. 12.</b>

<b>Miro Gallery near the Church of St Rochus</b> Prague 1, Strahovské nádvoří 1/132, tel. 233 354 066, www.galeriemiro.cz, info@galeriemiro.cz; Open daily 10.00–17.00 and on request
<b>MILA FÜRSTOVÁ (*1976)</b> – illustrations to Máj by Karel Hynek Mácha <b>8. 11. – 17. 11.</b> <b>GEORGES BRAQUE (1882–1963)</b> – selected prints <b>9. 11. 2023 – 5. 1. 2024</b>

<b>Museum Montanelli</b> Prague 1, Nerudova 13/250, tel. 257 531 220, 724 211 584, www.museummontanelli.com, info@museummontanelli.com Open Wed to Sun 14.00–18.00
<b>DANGEROUS LOVE</b> – love through the eyes of women. MuMo presents 24 female artists of various nationalities <b>until 30. 4. 2024</b>

<b>Národní knihovna ČR, Klementinum (National Library of the Czech Republic, Klementinum)</b> Prague 1, Klementinum 190, tel. 221 633 111, www.nkp.cz, www.facebook.com/narodni.knihovna; Open daily, except Mon 10.00–18.00
---

<b>Klementinum Gallery (gate B)</b> <b>THE JUBILEE EXHIBITION OF NATIVITY SCENES IN KLEMENTINUM. ONLY ONCE IN 100 YEARS</b> – on the occasion of the 800th anniversary of the first Nativity scene created by St. Francis of Assisi (1223) <b>23. 11. 2023 – 7. 1. 2024</b>
<b>Ground floor (gate A)</b> Open Mon to Sat 9.00-19.00 (closed on 17. – 18. 11., 23. – 26. 12. and 30. 12.)
<b>IN THE NAME OF THE BELARUSIAN NATION until 29. 12.</b> <b>WE HAVE BEEN THE MUSIC DEPARTMENT FOR 100 YEARS 9. 11. 2023 – 16. 1. 2024</b> <b>70 YEARS OF THE LIBRARIANSHIP INSTITUTE IN THE NATIONAL LIBRARY until 31. 12.</b>

<b>Nová síň (New Hall)</b> Prague 1, Voršílská 3, tel. 604 870 607, info@novasin.org, www.novasin.org Open daily, except Mon 11.00–18.00
<b>JITKA HILSKÁ: 70 – JOURNEYS</b> – forty years of artwork <b>until 5. 11.</b> <b>PRAGUE AUCTIONS</b> – pre-auction exhibition of art <b>7. 11. – 12. 11.</b> <b>ZDENA MARŠALOVÁ: IN MOTION 15. 11. – 3. 12.</b> <b>PRAGUE AUCTIONS</b> – pre-auction exhibition of art <b>5. 12. – 10. 12.</b> <b>RADKA VODÁKOVÁ AND VLASTIMIL VODÁK: SOME OF THE JOURNEYS</b> – textile artists present their new works <b>13. 12. 2023 – 14. 1. 2024</b>

<b>Novoměstská radnice (New Town Hall)</b> Prague 2, Karlovo nám. 1/23, entrance from Vodičkova 1/3, tel. 224 947 190 www.nrpaha.cz, info@nrpaha.cz, www.facebook.com/NRPaha Open daily, except Mon 10.00–18.00
<b>INVISIBLE EXHIBITION</b> – for more information visit www.neviditelna.cz

<b>Galerie v přizemí (Gallery on the Ground Floor)</b> <b>FREEMASONS – FREE MASONRY SEEN BY FREEMASONS</b> – exhibition commemorating 100 years of Freemasonry in Czechia <b>until 26. 11.</b> <b>IVA HÜTTNEROVÁ: PAINTINGS</b> – oil paintings and prints <b>8. 12. 2023 – 21. 1. 2024</b>
---

<b>Galerie ve věži (Gallery in the Tower)</b> <b>CULTURAL BRIDGES IN EUROPE / CZECH AND MORAVIAN ARISTOCRACY AFTER 1945 until 19. 11.</b> <b>THE EUROPE I WANT TO LIVE IN: MY REGION, PART OF THE EUROPEAN MOSAIC 2020 23. 11. – 10. 12.</b>
--

<b>Pragovka Gallery and The White Room</b> Prague 9, Kolbenova 923/34, x.pragovka.com Open Tue to Fri 14.00–20.00, Sat and Sun 12.00–18.00
<b>DEEP TIME WALK</b> – Michael Kindemay, Jímena Mendoza, Katarína Poliačiková, Jan Pražan <b>until 14. 12.</b> <b>PETR GRUBER: HIDDEN PLACES, IN PLAIN VIEW 17. 11. – 14. 12.</b> <b>EWA A JACEK DOROSZENKO: OVERLOOKED HORIZONS 17. 11. – 14. 12.</b> <b>EXPERIMENT – BOUDNÍK'S HANDLE</b> – Matěj Hrbek, Tomáš Hrubíš, Iva Krupicová, Eduardo Lara, Zuzana Růžicková <b>17. 11. – 14. 12.</b> <b>OUTSIDE THE POTTER'S WHEEL</b> – 29th year of International Symposium of Ceramics in Bechyně <b>17. 11. – 30. 11.</b>

<b>Rudolfinum Gallery</b> Prague 1, Alšovo nábřeží 12, tel. 227 059 205, www.galerierudolfinum.cz, galerie@rudolfinum.org; Open daily, except Mon 10.00–18.00, Thu 10.00–20.00
<b>CO – EXTENSIVE until 21. 1. 2024</b>

<b>Zdeněk Sklenář Gallery</b> Prague 1, Schönkirch Palace, Mikulandská 135/7, tel. +420 773 794 510, galerie@zdeneksklenar.cz, www.zdeneksklenar.cz, www.instagram.com/galerie_zdenek_sklenar; Open Tue to Sat 13.00–18.00
<b>SALON 01 from 6. 6.</b> <b>VÁCLAV BOŠTIK 110: BLOODY LAURELS 8. 11. – 29. 11.</b> <b>JIRÍ JOHN 100: JUVENILIA 8. 11. – 29. 11.</b>

<b>SmetanaQ Gallery</b> Prague 1, Smetanovo nábřeží 334/4 www.smetanaq.cz, gallery@smetanaq.cz, tel. 774 414 338 Open daily, except Mon 11.00–18.00
<b>SOFTHEADED</b> – K. Adamus, M. Klimeš, P. Kvičala, O. Laubert, M. Magni, V. Malina, M. Maur, M. Palla, M. Šejn, J. Šigut, J. Valoch <b>until 26. 11.</b> <b>TRACES OF TOMORROW</b> – paintings by Kateřina Ondrušková, Barbora Valášková and Markéta Bábková combine a sense of touch with overworked materiality and experiment with its elusive volatility <b>21. 12. 2023 – 11. 2. 2024</b>

<b>Galerie Václava Špály (Václav Špála Gallery)</b> Prague 1, Národní 30, www.galerievaclavaspaly.cz, info@galerievaclavaspaly.cz, tel. 251 510 760; Open daily 11.00–19.00
<b>IVANA LOMOVÁ: MIA CAMERA until 3. 12.</b>

<b>Toyen Gallery</b> Prague 3, Milešovská 846/1, tel. +420 222 116 800; https://www.galerietoyen.cz, info@toyengallery.cz; Open Mon to Fri 8.00–18.00, Sat 8.00–14.00
<b>KLÁRA SEDLÁČKOVÁ: LITTLE 15 November</b> <b>JAN HOMOLA &amp; MIKULÁŠ HOMOLA December</b>

<b>Umělecká beseda – Art department</b> www.umeleckabeseda.cz; odbor-vytvarny, umeleckabesedavo@seznam.cz
<b>Makráč Gallery</b> Prague 6, Heyrovského nám. 2, www.imc.cas.cz; Open Mon to Fri 8.00–18.00
<b>A VIEW INTO THE WORKSHOP OF SVATOPLUK KLIMES until 26. 11.</b> <b>MIROSLAV ŠNAJDR, SEN. 30. 11. 2023 – 7. 1. 2024</b>

<b>Jilská 14 Gallery</b> Prague 1, Jilská 14, www.jilska14.cz; Open Wed to Sat 14.00–19.00
<b>I-WĚ</b> – the 100th exhibition of TS Exhibition Society <b>7. 12. 2023 – 24. 2. 2024</b>

<b>The Prague City Museum – Clam-Gallas Palace</b> Prague 1, Husova 20, www.muzeumprahy.cz; Open daily, except Mon 10.00–18.00
<b>FREEDOM IN ART</b> – Exhibition on the occasion of the 160th anniversary of Umělecká beseda <b>4. 12. 2023 – 29. 2. 2024</b>

<b>Galerie U Betlémské kaple (Gallery At the Bethlehem Chapel)</b> Prague 1, Betlémské nám. 8, tel. 222 220 689, www.galerieubetlemskekaple.cz, www.facebook.com/galerieubk; Open daily Mon to Thu 10.00–18.00, Sat and Sun 12.00–18.00
<b>ŠÁRKA KOUDELOVÁ: I LOST MY ABILITY TO SLEEP IN A NIGHTGOWN</b> – paintings and object installations <b>9. 11. – 3. 12.</b>

<b>Galerie U Zlatého kohouta (The Golden Cock Gallery)</b> Prague 1, Michalská 3, www.guzk.eu, tel. +420 224 221 999; Open Mon to Sat 12.00–18.00 Please find more information on: www.guzk.eu, www.facebook.com/uzlatehokohouta/
---

<b>Villa Pellé Gallery</b> Prague 6, Pelléova 10, tel. 224 326 180, www.villapelle.cz, info@villapelle.cz; Open daily, except Mon 13.00–18.00
<b>MASKER: THE BALL OR YOU WILL PASS TEN BOULDERS ON THE WAY TO THE ABYSS</b> – paintings by Jakub Matuška aka Masker <b>until 7. 1. 2024</b>

<b>České galerie, z.s.</b> <b>Týnská literární kavárna (Týnská Literary Café)</b> Prague 1, Týnská 6, tel. 224 827 807, www.tynska-literarni-kavarna.webnode.cz Open Mon to Fri 13.00–23.00
<b>TEREZA KOTEK: SOURCES OF JOY</b> – paintings by a Group F member <b>1. 11. – 15. 12.</b> <b>JINDŘICH MODRÁČEK 15. 12. 2023 – 31. 1. 2024</b>

<b>BRNO</b>
<b>MORAVIAN GALLERY IN BRNO</b>
www.moravska-galerie.cz, info@moravska-galerie.cz, tel. 532 169 111 Open Wed to Sun 10.00–18.00, Thu 10.00–19.00, Mon and Tue closed

<b>Pražák Palace</b> Brno, Husova 18
<b>ART IS HERE: MODERN ART, ART IS HERE: NEW ART permanent exhibition</b> <b>PAVEL BÜCHLER: SIGNS OF LIFE until 25. 2. 2024</b> <b>THE MOST BEAUTIFUL CZECH BOOKS 2022 7. 12. 2023 – 29. 3. 2024</b>

<b>Jurkovič House</b> Brno-Žabovřesky, Jana Nečase 2, jurkovic@moravska-galerie.cz Open daily, except Mon 10.00–18.00
<b>DUSAŇ JURKOVIC: THE ARCHITECT AND HIS HOUSE permanent exhibition</b> <b>JAKUB BERDYCH KARPELIS: WITHOUT SAYING until 31. 3. 2024</b>

<b>Museum of Applied Arts</b> Brno, Husova 14
<b>ART DESIGN FASHION</b> – contemporary design and fashion <b>permanent exhibition</b> <b>VRTIŠKA &amp; ŽÁK: FOR GOOD DESIGN until 28. 1. 2024</b> <b>MADE BY FIRE 17. 11. 2023 – 31. 8. 2024</b>

<b>HOUSE OF ARTS</b> Brno, Malinovského náměstí 2, tel. 542 213 883, info@dum-umeni.cz, http://www.dum-umeni.cz; Open daily, except Mon 10.00–18.00
<b>EVA KMENTOVÁ until 19. 11.</b> <b>GARY HILL, STEINA &amp; WOODY VASULKA: SUMS AND DIFFERENCES 13. 12. 2023 – 3. 3. 2024</b>

<b>Vašulka Kitchen Brno</b> Open Tue to Thu 10.00–18.00
<b>OPEN DIGITAL ARCHIVES &amp; TEST LABORATORY FOR A LIVE AUDIENCE 13. 12. 2023 – 4. 2. 2024</b>

<b>The House of the Lords of Kunštát and G99 Gallery</b> Brno, Dominikánská 9
<b>BLACK HOLE SUN until 12. 11.</b> <b>ALFONS SCHILLING: BRAINSCAPE 13. 12. 2023 – 4. 2. 2024</b>

<b>ART GALLERY BRNO</b>
Brno, Veverří 455/8, tel. 722 988 700, info@artgb.cz, www.artgallerybrno.cz, www.facebook.com/artgallerybrno Open Wed to Fri 13.00–18.00 or on request (call 722 988 700)
<b>PATRIK HÄBL: THE PILGRIM</b> – large-scale landscapes and selected paintings from The Pilgrim set <b>until 28. 11.</b> <b>ZDENA HÖHMOVÁ: INTROSPECTION</b> – selected paintings and drawings connected through the topic of introspection as a substantial impulse for abstract art <b>14. 12. 2023 – 23. 2. 2024</b>

<b>B E C H Y N Ě</b>
<b>South Bohemian Gallery – International Museum of Ceramics</b> Bechyně, Novodvorská 301, tel. 381 213 092, 704 550 102, www.ajg.cz, bechyne@ajg.cz; Open May to October daily, except Mon 10.00–18.00, November to April daily, except Mon 9.00–17.00, Sun 12.00–17.00
<b>THE PRESENT OF TRADITION permanent exposition</b> <b>SILENT PLACES</b> – the outcomes of art symposium AJG 2022 <b>until 12. 11.</b>

# Czech galleries

25th anniversary

11-12/2023



**SAMUEL PAUČO 10. 11. 2023 – 11. 2. 2024**  
**VARIABLE EXPOSITION** – the exhibition will present the most important groups of works of art from the collections **10. 11. 2023 – 26. 5. 2024**

**ROŽNOV POD RADHOŠTĚM**

**Crears Gallery**  
 Rožnov pod Radhoštěm, nábřeží Dukelských hrdinů 442, www.galeriecrears.cz; tel.: 739 403 486, 723 005 445; Open Wed to Fri 10.00–12.00, 15.00–17.00, Sat 9.30–12.00  
**JAKUB TOMÁŠ: FIELD ROBOT TO MYSELF** – paintings **until 30. 11.**

**Stage Garden Gallery Crears**  
 Rožnov pod Radhoštěm, Na Zahradách 2186  
**IVANA ŠTENČLOVÁ: FREE SET** – 3D paintings **until 31. 12.**

**ŠUMPERK**

**Galerie Jiřího Jílka (Jiří Jílek Gallery)**  
 Šumperk, Sady 1. máje, www.jirijilek-galerie.cz, pavlinavogelova@jirijilek-galerie.cz. Otevřeno út-ne 13.00–17.00  
**ELENA HELFŘECHT & TERI VARHOL: OMEN** **until 12. 11.**  
**ANTONÍN KRATOCHVÍL: BEHIND GOD'S CURTAIN** – one of the most prominent figures of world photography does humanistic photography with arctic undertones **15. 11. 2023 – 14. 1. 2024**

**TÁBOR**

**Táborské městské galerie (Tábor Municipal Galleries)**  
 www.galerietabor.cz, galerie@mutabor.cz, tel. 381 215 401

**Galerie U radnice (Town Hall Gallery)**

Tábor, Martinka Húsky 54, open daily 10.00–12.00 and 13.00–17.00 (May to September), and daily, except Mon 10.00–12.00 and 13.00–16.00 (October to April)

**MARTIN SALAJKA: THE CRY OF THE FOREST** – paintings and prints depicting nature, life, death, birth and decay **9. 11. 2023 – 14. 1. 2024**

**Galerie 140**

Tábor, Koželužská 140, open daily 10.00–12.00 and 13.00–17.00 (May to September), and daily, except Mon 10.00–12.00 and 13.00–16.00 (October to April)  
**THE BRIGHT STAR CAME FORTH** – traditional Christmas exhibition **23. 11. 2023 – 7. 1. 2024**

**TELČ**

**Městská galerie Hasičský dům v Telči (Municipal Gallery Hasičský dům)**

Telč, nám. Zachariáše z Hradce 122, tel. 567 112 407-8, www.telc.eu/kren, info@telc.eu; Open Fri to Sun 10.00–12.00 and 13.00–16.00  
**JAN KŘEN: WHAT DOES THE WORLD CONSIST OF?** – exhibition commemorating 100 years since the original artist and thinker from Myslibof near Telč was born **until 7. 1. 2024**

**VALAŠSKÉ MEZIŘÍČÍ**

**Galerie Kaple a Galerie Šypka (The Chapel and The Granary Gallery)**

Valašské Meziříčí, Komenského 30, tel. 774 063 305, www.galerie.kzvalmez.cz, galerie@kzvalmez.cz; Open Tue to Fri 9.00–17.00, Sat and Sun 13.00–17.00  
**MARTÍN FROULÍK: RECONSTRUCTION OF A ROE DEER** **until 19. 11.**  
**JAROSLAV KOLÉSEK: A MISSIONARY, A PREACHER AND GOD'S MILL** **15. 11. 2023 – 19. 1. 2024**  
**SILVIA SAPAROVÁ: INSTANT PRESENCE** **29. 11. 2023 – 4. 2. 2024**

**VELVARY**

**Tomáš Vosolsobě Gallery**

Velvary, nám. Krále Vladislava 10, www.facebook.com/GalerieTomaseVosolsobe  
 Open Sat 10.00–17.00 and on request, tel. 728 771 636  
**TOMÁŠ VOSOLSOBĚ: STRUCTURES** – the common feature of the exhibited works is the artist's interest in relief structures that expand from the image surface into space **until 12. 11.**

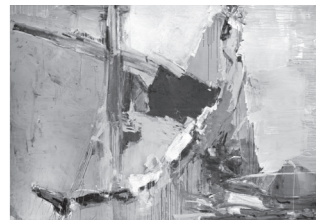
**ZLÍN**

**Regional Gallery of Fine Arts**

Zlín, Vavrečkova 7040, tel. 573 032 220, www.galeriezlinc.cz, info@galeriezlinc.cz  
 Open daily, except Mon 10.00–18.00  
**SPACE ZLÍN / ORDERS OF VISION** **until 12. 11. 2023**  
**TRIENNIAL EXHIBITION HOUSE OF ART II: SALON L. Š.** – exhibition commemorating Ludvík Ševeček, a prominent art historian and director of the Zlín Gallery **21. 11. 2023 – 4. 2. 2024**

Czech galleries

www.ceskegalerie.cz/en  
 info@ceskegalerie.cz  
 Tel. 777 800 383



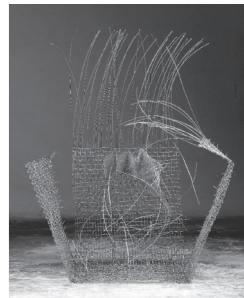
ART Concept Gallery, Prague 1  
 Pavel Roučka: Adam's Lament



Kroupa Gallery, Prague 1  
 Vlastimil Beránek: Showroom Prague



Stage Garden Gallery Crears, Rožnov pod Radhoštěm  
 Ivana Stenclová: Free Set



New Hall, Prague 1  
 Radka Vodáková, Vlastimil Vodák: Some of the Journeys

**Galerie výtvarného umění v Ostravě (Gallery of Fine Arts in Ostrava)**

Ostrava 1, Jurečkova 9, www.gvuo.cz, info@gvuo.cz; tel. 596 115 425  
 Open daily, except Mon 10.00–18.00

**THE HOUSE OF ART IN OSTRAVA** **until 31. 12.**

**PAVEL ŠMID: RITUALS** **until 3. 12.**

**JIRÍ JOHN: BEAUTY HIDDEN BELOW THE SURFACE** **until 12. 11.**

**JAROSLAV KAPEČ: THE MULTIPLICITY OF LIFE** **until 31. 12.**

**ANTONÍN TOMALÍK: AMONG HIS OWN** **until 31. 12.**

**BEDŘICH DLOUHÝ: ALLEY OF COURAGE** **5. 9. 2023 – 7. 1. 2024**

**WOMEN OVER THE COURSE OF TIME** **22. 11. 2023 – 28. 1. 2024**

**PAVEL FORMAN: DAY OF NIGHT** (opening 12. 12. at 5 p. m.) **13. 12. 2023 – 11. 2. 2024**

**ZaZa Gallery**

Ostrava, Sokolská třída 1758/4, tel. 605 851 340, www.galeriezaza.cz, zazagalerie@seznam.cz; Open Tue to Fri 12.30–17.00

**SAMUEL PAUČO: THE LAST ONE SHALL TURN**

**THE LIGHTS OFF** – paintings **until 10. 11.**

**HANA WATRAL MIKULENKOVÁ: THAT'S WHY WE ARE CELEBRATING** – paintings **from 17. 11.**

**PARDUBICE**

**Gočárová galerie (Gočár Gallery)**

www.gocarovagalerie.cz, vcg@gocarovagalerie.cz, tel. 466 510 003  
 Open daily, except Mon 10.00–18.00

**Dům U Jonáše**

Pardubice, Pernštýnský nám. 50, tel. 466 501 897

**VIKTOR DEDEK: LUDOMANCER** **until 19. 11.**

**ENCHANTED BY ILLUSTRATION** – books and projects from the studio of Renáta Fučíková at Ladislav Sutnar Faculty of design and art **9. 11. 2023 – 2. 3. 2024**

**Automatic Mills**

**TRANSMISSION** **permanent exhibition**

**BIG LITTLE PLEASURES** – jewellery and objects by Pavel Herynk **until 14. 1. 2024**

**ROAMING TOWARDS YOURSELF** **until 31. 3. 2024**

**P L Z E Ň**

**Západočeská galerie v Plzni (West Bohemian Gallery in Plzeň)**

www.zpc-galerie.cz, info@zpc-galerie.cz, tel. 377 908 511  
 Open daily, except Mon 10.00–18.00

**Výstavní síň „13“ (Exhibition Hall „13“)**

Plzeň, Pražská 13

**FULL STEAM AHEAD!** – ships and navigation in Czech painting 1850-1950 **until 4. 2. 2024**

**Exhibition Hall Masné Krámy**

Plzeň, Pražská 18

**...AND I SAW A NEW HEAVEN AND A NEW LAND...** **until 3. 3. 2024**

**P O D Ě B R A D Y**

**Galerie Ludvíka Kuby Poděbrady (Ludvík Kuba Gallery)**

Poděbrady, Libušina, tel. 602 444 134, www.galerieludvikakuby.cz  
 Open daily, except Mon 10.00–12.00 and 13.00–18.00

**FRANCISCO GOYA: CAPRICES** – a famous set of art prints **4. 11. 2023 – 28. 1. 2024**

**R A K O V N Í K**

**Rabasova galerie Rakovník (Rabas Gallery)**

Rakovník, Vysoká 232, www.rabasgallery.cz, rabasova.galerie@tiscali.cz  
 Open daily, except Mon 10.00–18.00, in December Tue to Fri 10.00–18.00, Sat and Sun 10.00–16.00

**VACLAV RABAS** **permanent exhibition**

**ALEŠ SVOBODA: TRANSFORMATIONS OF GEOMETRY** **until 19. 11.**

**1ST PHOTOCLUB NEKAZANKA** **23. 11. 2023 – 4. 2. 2024**

**Nová síň pod Vysokou bránou (New Hall under High Gate)**

Rakovník, Vysoká 226

**JIRÍ ANDERLE: 100 PAINTINGS** **until 30. 12.**

**Výstavní síň na radnici (Town Hall exhibition hall)**

Rakovník, Husovo náměstí 27

**MILAN BAUER: PRINTS** **until 2. 12.**

**PHOTOCLUB AMFORA** **7. 12. 2023 – 14. 1. 2024**

**ROUDNICE NAD LABEM**

**Galerie moderního umění v Roudnici nad Labem (Modern Art Gallery)**

Roudnice nad Labem, Očkova 5, tel. 416 837 301, www.galerieroudnice.cz, galerie@galerieroudnice.cz; Open daily, except Mon 10.00–17.00

**PĚTR STANICKÝ: MEMORY PLACES** **10. 11. 2023 – 11. 2. 2024**

**NOVÉ MĚSTO NA MORAVĚ**

**Horácká galerie v Novém Městě na Moravě (Horácká Gallery)**

Nové Město na Moravě, Vratislavovo nám. 1, tel. 566 654 211  
 pokladna@horackagalerie.cz, www.horackagalerie.cz

Open Tue to Fri 9.00–12.00 and 13.00–17.00, Sat 9.00–13.00, Sun 14.00–18.00

**VINCENC MAKOVSKÝ: FROM THE WORKS OF JAN ŠTŮRSA, LANDSCAPE PAINTING, JAROSLAV SVOBODA, JOSEF KLIMĚŠ, JIRÍ VAŠICA, THE CHATEAU CABINET** **permanent exhibitions**

**RENATA SLÁDKOVÁ: MYTHICAL WORLD** – fired clay and glass **until 12. 11.**

**EVA VLASÁKOVÁ: ANGELS AND OTHER BEINGS INSIDE US** **8. 11. – 31. 12.**

**ŠTĚPÁN VRBICKÝ: DRAWINGS** **22. 11. 2023 – 14. 1. 2024**

**THE BEST OF GCWC** **2023** **1. 11. – 30. 11.**

**IRENA ARMUTIDISOVÁ: STUDIO PHOTOGRAPHS** **1. 11. – 30. 11.**

**O L O M O U C**

**Muzeum umění Olomouc (Museum of Art in Olomouc)**

www.muoc.cz; info@muoc.cz, tel. 585 514 111; Open daily, except Mon 10.00–18.00

**Muzeum moderního umění Olomouc (Museum of Modern Art)**

Olomouc, Denisova 47

**THE CENTURY OF RELATIVITY. 20TH CENTURY ART** **permanent exhibition**

**VOLUME OF A SOUL** – sculpture collection of the Museum of Art in Olomouc **until 14. 1. 2024**

**HARBOURS OF RESTLESSNESS. ART BRUT IN POLAND** **until 25. 2. 2024**

**ELEVATION/ZDENĚK BERAN: REHABILITATION DEPARTMENT DR. DR.** **30. 11. 2023 – 21. 4. 2024**

**Arcidiecézní muzeum Olomouc (Archdiocesan Museum)**

Olomouc, Václavské náměstí 3

**YOU ARE HERE: ST WENCESLAS HILL IN THE COURSE OF THE CENTURIES** **permanent exhibition**

**IN GLORY AND PRAISE. ONE THOUSAND YEARS OF SPIRITUAL CULTURE IN MORAVIA** **permanent exhibition**

**JOHN AND JOHN. LEGENDS OF JOHN OF NEPOMUK AND JAN SARKANDER IN VISUAL ART** **until 28. 1. 2024**

**ART Gallery**

Olomouc, Dobnerova 1375/24a, www.artrubikon.com, art@artrubikon.com  
 Open Mon to Sat 8.00–18.00

**IVAN MLÁDEK** – paintings by the musician Ivan Mládek with reversed perspective **until 24. 11.**

**PAVEL ROUČKA** – a painter, graphic designer and illustrator, exhibiting paintings with expressive figurative compositions and impressive colours **27. 11. 2023 – 12. 1. 2024**

**Rubikon Gallery**

Olomouc, 1. máje 24, www.galerierubikon.cz, galerierubikon@seznam.cz  
 Open Mon to Fri 9.00–13.00 and 13.30–18.00, Sat 9.00–12.00

**JAROMÍR GARGULÁK** – paintings and bronze sculptures **until 25. 11.**

**CHRISTMAS SALON** – a joint exhibition with winter and Christmas themes **27. 11. 2023 – 27. 1. 2024**

**O P A V A**

**House of Art and St Wenceslas Church**

Opava, Pekařská 12, dum.umeni@oko-opava.cz, www.dumumeniopava.cz, tel. 553 668 734, 734 862 481; Open daily, except Mon 10.00–18.00

**IMAGINARIUM** – the exhibition presents the creative, playful and mysterious world of the theatre artists and friends related to the Forman Brothers Theatre **16. 11. 2023 – 3. 3. 2024**

**JINDRA ČAPEK FANTASY WORLD** – two hundred original book illustrations for children **16. 11. 2023 – 3. 3. 2024**

**Opava Municipal house and Eisler Gallery**

Opava, Ostrožná 46, obecni.dum@oko-opava.cz, www.galerieopava.cz, tel. 553 791 947, 734 518 907, Open daily, except Mon 10.00–18.00

**JIRÍ SIEBER** – the artist's impulse for painting is industrial landscape and its revitalization **until 26. 11.**

**30 YEARS OF ART STUDIES AT ŠSPU** – works of students **9. 11. 2023 – 26. 1. 2024**

**O S T R A V A**

**Centrum kultury a vzdělávání (The Centre of Culture and Education)**

Ostrava, Sokolská třída 26, cvk-ostrava.cz, tel. 596 138 821

**LUKÁŠ RAIS, ANDREJ MARGOC, MICHAL TRPÁK, JAKUB FLEJŠAR: SCULPTURES!!! VOL 2 ...YUMMY, YUMMY** (Komenského sady) **until 31. 5. 2024**

**DANIEL HANZLIK: READING A WAVE** (Exhibition hall Sokolská 26) **until 24. 11.**

**SZOPKI – CRECHE OF KRAKOW** (Hans Ulrich Villa) **2. 12. – 30. 12.**

**Diecézní muzeum v Litoměřicích (Litoměřice Diocese Museum)**

Litoměřice, Mírové nám. 24/16 (front wing)

**permanent exhibition**

**JAN KNAP: INTERVENTION IN THE MUSEUM** **3. 11. 2023 – 28. 1. 2024**

**Muzeum insitního umění (Naive Art Museum)**

Litoměřice, Mírové nám. 24/16 (rear wing)

**NAÏVE ART AND ART BRUT** **permanent exhibition**

**L O U N Y**

**Galerie města Loun (Municipal Art Gallery)**

Louny, Osvoboditelů 441, www.gaml.cz, info@gaml.cz, tel. 415 653 137  
 Open Tue to Sun 14.00–18.00

**FRANTIŠEK SKÁLA: PAINTINGS** **16. 11. 2023 – 31. 3. 2024**

**Galerie Benedikta Rejta v Louncech (Benedikt Rejt Gallery in Louny)**

Louny, Pivovarská 34, www.gbr.cz, gbr@gbr.cz, tel. 778 728 992  
 Open daily, except Mon 10.00–18.00

**TOMÁŠ POLČAR: SOMA** – a monographic exhibition documenting long-term efforts to achieve harmony through intuitive landscape painting and rational geometry **9. 11. 2023 – 11. 2. 2024**

**ADRIÉNA ŠIMOTOVÁ: FIRST VISITES** **9. 11. 2023 – 11. 2. 2024**

**M Ě L N Í K**

**MEKUC – Cultural Centre / Galerie Ve věži (Gallery In the Tower)**

Mělník, Pražská brána, ulice 5. května, galerie@mekuc.cz, www.mekuc.cz  
 Open Mon to Fri 9.00–20.00, Sat 10.00–20.30, Sun 10.00–20.00

**JAROSLAV KUČERA: THE PEOPLE I HAVE MET** – photographs **until 10. 12.**

**ŠLAJCH & JERIE. TĚTE Ā TĚTE** – mutual inspiration in making comics **13. 12. 2023 – 25. 2. 2024**

**Galerie Za Rohem, Městská knihovna Mělník**

Mělník, Náměstí Karla IV. 3359, knihovna@mekuc.cz  
 Open Mon, Wed 10.00–18.00, Tue, Thu 8.00–17.00, Sat 9.00–12.00

**STROLLING THROUGH THE BOOKS BY PETR SIS** **until 31. 1. 2024**

**WILLIAM SHAKESPEARE IN COMICS** **14. 12. 2023 – 22. 2. 2024**

**Masarykův kulturní dům (Masaryk House of Culture)**

Mělník, U Sadu 323, open Mon to Fri 13.00–18.00